

Digital Sketchbooks

Five activities using tablets at a museum

Working with tablets

A tablet is an ideal tool for gathering information in a museum. It does not replace a traditional sketchbook, but it does offer features which are useful for pupils who have limited time in which to collect visual and textual information.

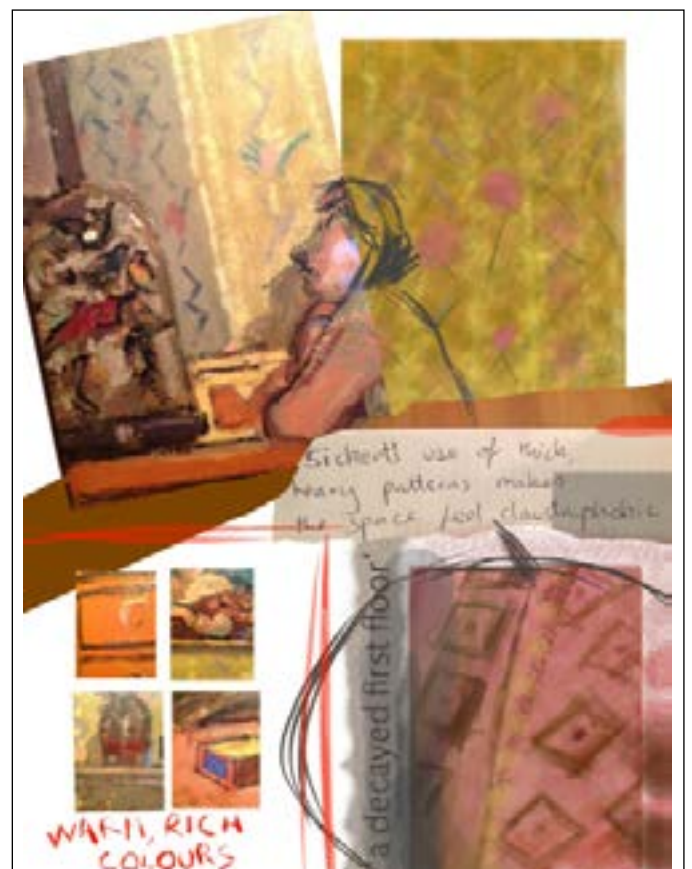


1. Research poster

Brief: Find 12 portraits from the ancient Greek and Roman world for a project on classical portraiture.

App used: Pic Collage - selecting, photographing, importing and cropping of images from the collection

Time for exercise: 30 - 45 minutes



2. Analyse a painting

Brief: Select a painting and make notes on its colour, pattern and mood. This had to include photographed images, colour swatches and representations of pattern.

App used: Brushes 3 - working on different layers to combine photos, drawings and annotation on the page

Time for exercise: 45 - 60 minutes

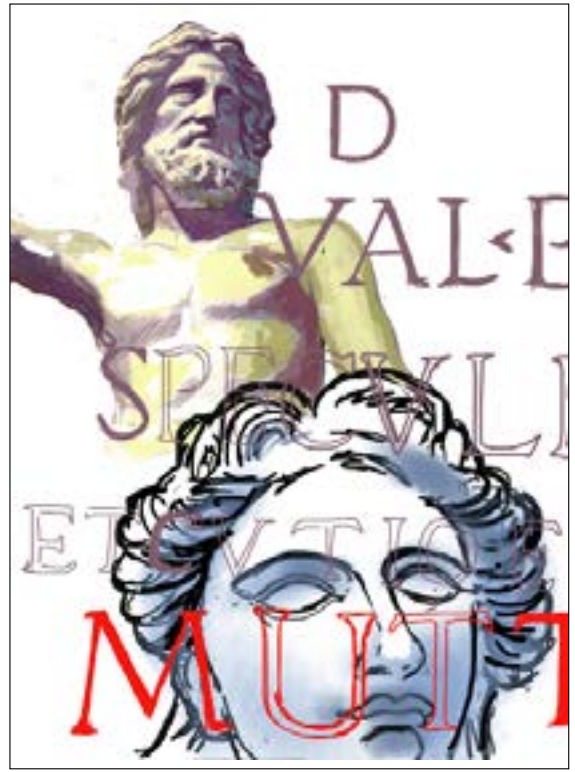


3. Enhance and generate ideas

Brief: select a portrait from the Ashmolean's 17th paintings and work into the face and background by drawing or importing photographs to transform the original image

App used: Brushes3 - desaturate or invert colours, flip the image or import other images from the camera roll or web

Time for exercise: 45 - 60 minutes



4. Generate a design in the gallery

Brief: Create a design advertising the Ashmolean's Cast Gallery (focus on design skills rather than collecting information)

App used: Brushes 3 - utilising both photography and drawing tools. Large figure was photographed and then colouring tools were used to draw into it. The large head and Latin text were drawn freehand.

Time for exercise: 60 - 90 minutes



5. Enhance and generate ideas

Brief: produce a page looking closely at the colour and brushwork in Manet's painting of Madame Claus.

App used: Brushes 3 - create the effects of a range of drawing and painting materials, select a swatch of colour from the painting to reproduce.

Time for exercise: 45 - 60 minutes